

YAESU
The radio

FTM-400XDR/XDE

Main Firmware Update Instruction Manual

(This firmware is not compatible with the FTM-400DR/DE)

YAESU MUSEN CO., LTD.

Introduction

This application is a software tool for updating the firmware of transceivers manufactured by Yaesu Musen Co., Ltd. Currently there are three different destination versions USA, AUS and EXP (including EU and CHN) of the FTM-400XDR/XDE. You must check which version radio you have and use the correct update software. The destination is marked on the box serial number label.

- DST: USA version covers North and South America [FTM-400XD_ver*** (USA).zip]
- DST: AUS version covers Australia and New Zealand [FTM-400XD_ver*** (AUS).zip]
- DST: EXP/EU/CHN covers all other countries [FTM-400XD_ver*** (EXP).zip]

CAUTION!

Be sure to confirm the model and the version of your transceiver before starting the update. Writing incorrect firmware to the transceiver may cause abnormal operation or failure.

Important Notes

- All responsibility for the usage of this software lies with the customer. We cannot be held responsible in any way for any damages or losses which may be incurred by the customer as a result of using this software.
- Copyrights and all other intellectual property rights for the software, as well as the software manual, are the property of YAESU MUSEN CO., LTD.
- The revision, modification, reverse engineering, and decompiling of this software is prohibited. Redistribution, transfer, and resale of downloaded files are also prohibited.
- Downloaded files may only be used for personal use.
- If you cannot perform firmware upgrading yourself, please consult with one of our sales sites or service centers.

System Requirements (Operating Environment)

In order to use this program, a personal computer (PC) with one of the following Windows operating systems, and a USB data connection cable are required

Supported Operating Systems

One of the following operating system environments:

- Microsoft® Windows® 10 (32 bit / 64 bit)
- Microsoft® Windows® 8.1 (32 bit / 64 bit)
- Microsoft® Windows® 8 (32 bit / 64 bit)
- Microsoft® Windows® 7 (32 bit / 64 bit, Service Pack 1 or later)

CPU

The performance of the CPU must be able to satisfy the operating system requirements.

RAM (System Memory)

The capacity of the RAM (system memory) must be more than sufficient to satisfy the operating system requirements.

HDD (Hard Disk Drive)

The capacity of the HDD must be more than sufficient to satisfy the operating system requirements.

In addition to the memory space required to run the operating system, about 50 MB or more of additional memory space is required to run the program.

Necessary PC peripheral interfaces

USB interface (USB Port) or Serial Port (RS-232C)

Cables

PC connection cable SCU-20 or Data cable CT-163 or CT-165

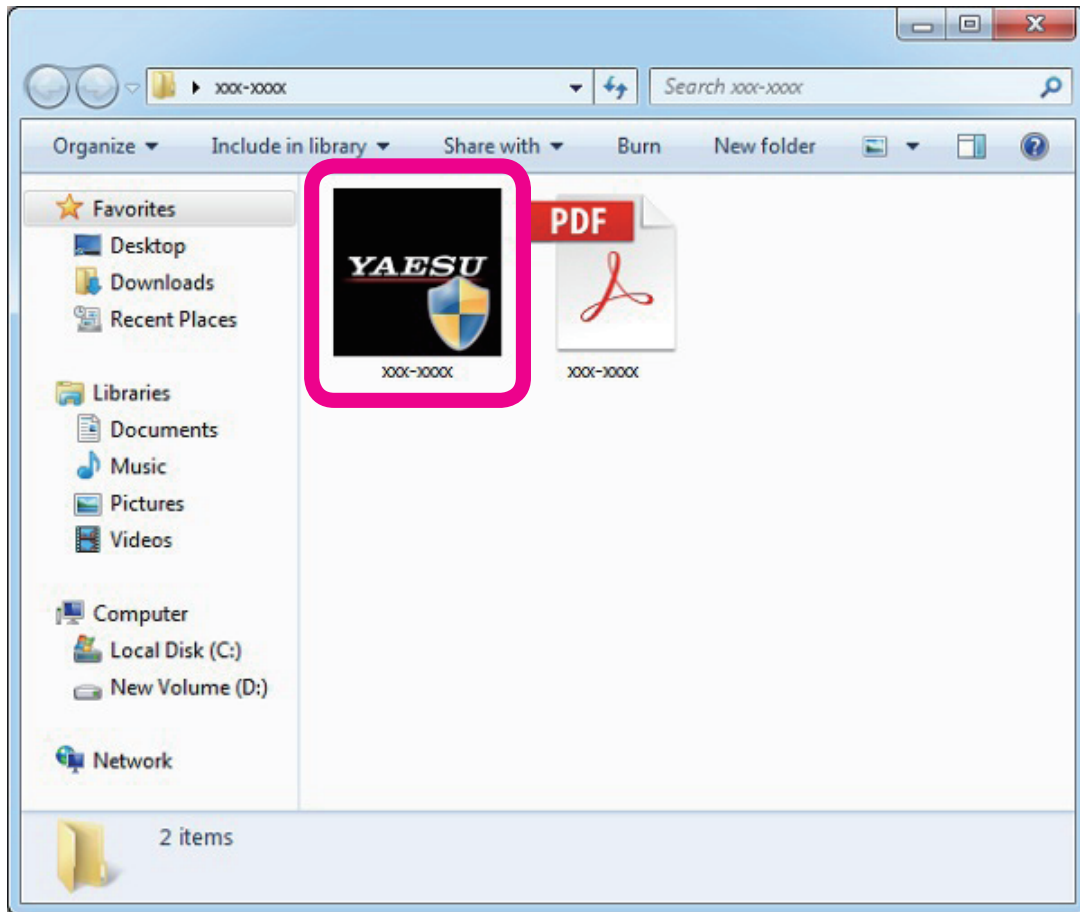
CAUTION!

When using the SCU-20 data cable, install the SCU-20 driver software before attempting to update the firmware. Go to the following website to download and install the driver software for the SCU-20 (<http://www.yaesu.com/>).

Install / Uninstall Procedure

Installation procedure

1. Download and unzip (extract) the update program.
2. When decompressed, the folder will automatically open. Click on the Yaesu icon in the folder to execute the update program.



Uninstall procedure

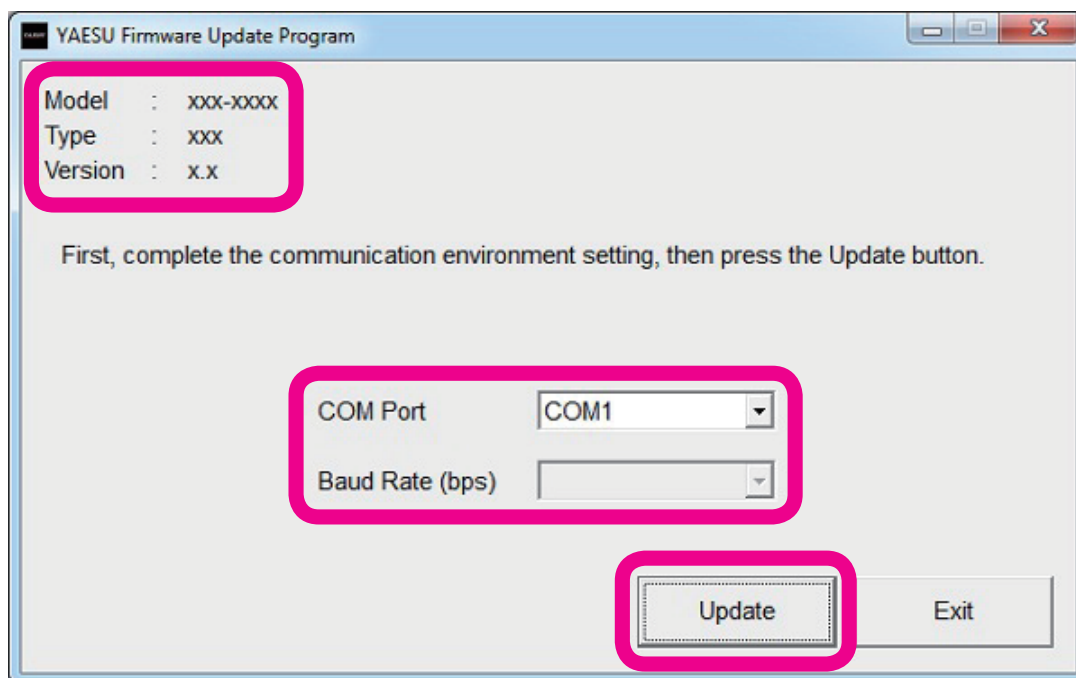
Delete the folder opened by the update program.

The operation will end if the opened folder is deleted since no data will be written to the registry and system folder.

Using the Programmer

Press the Update button to display the preparation procedure screen which explains what to do before updating. Follow the procedure below.

Start-up Screen



When the update program is opened, the above screen will appear to permit setting the Com Port number and the Baud Rate respectively.

(a) Check the Model and the Destination (Type)

Before writing software to the transceiver, first make sure to verify the Model and the Destination (Type), and the correct firmware.

CAUTION!

Writing incorrect firmware to the transceiver may cause abnormal operation or failure.

(b) Set the COM Port

Set the COM Port number to the Port used in connecting the PC and FTM-400XDR/XDE.
The port number can be verified by accessing the Windows PC device manager.

(c) Set the Baud Rate (bps)

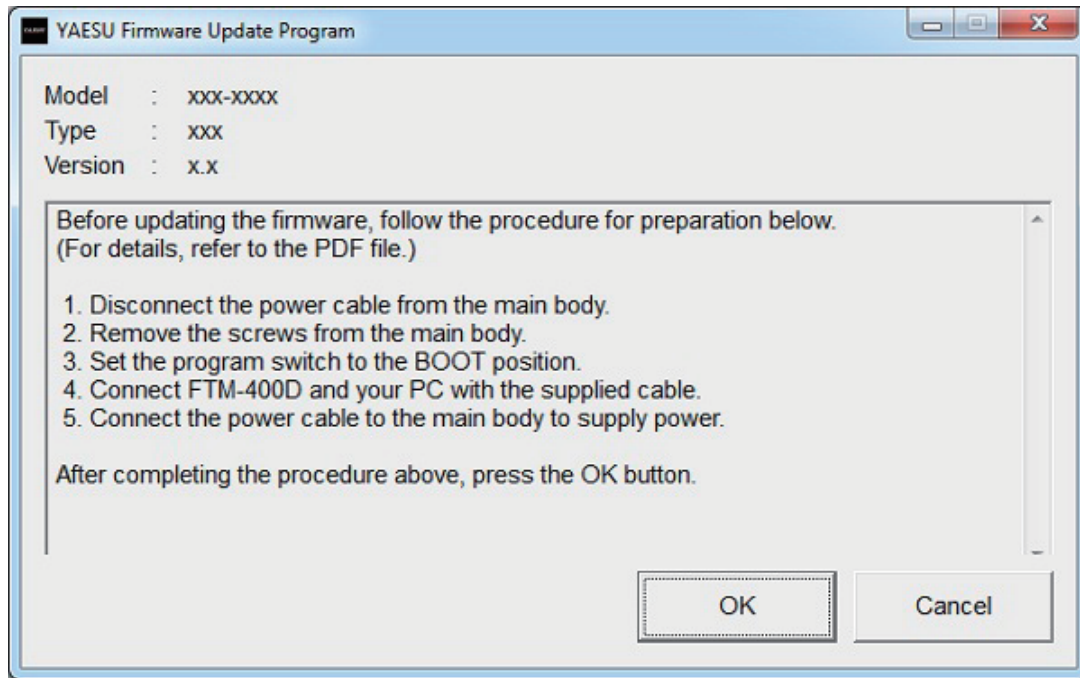
Set the communication speed (bps) for transferring the firmware data.
(The speed is set automatically in the FTM-400XD series.)

Commence Update

When steps (a), (b) and (c) above are complete, press the Update button to advance to the next screen (preparations prior to transmission).

Pressing the EXIT button will end the program without updating the firmware.

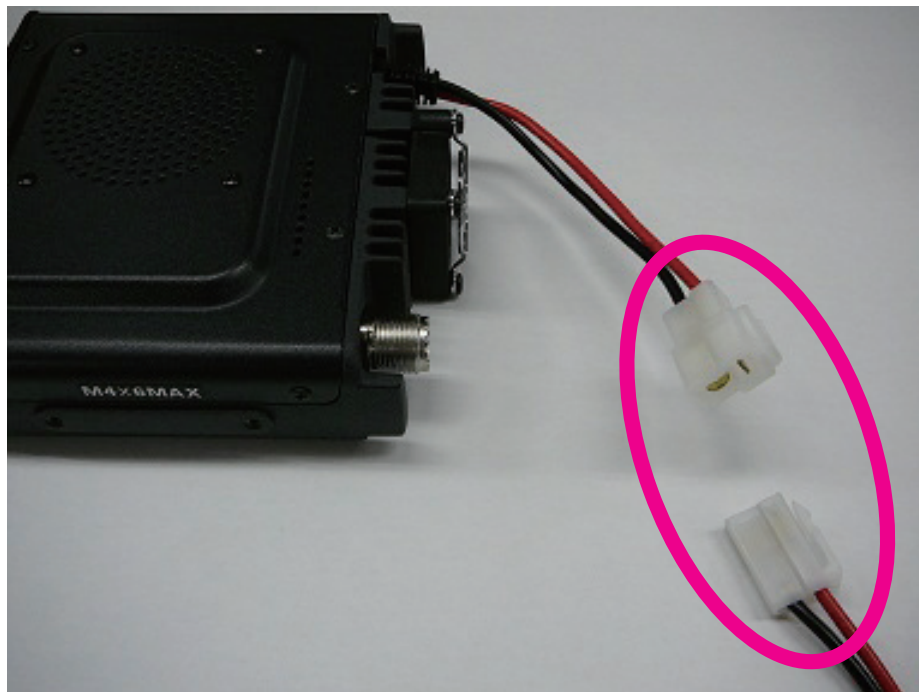
Preparing for the Update Transfer



Press the Update button to display the above screen. The procedures required to prepare the transceiver to receive the firmware update are listed, carry out the respective tasks as follows:

Disconnect the power cable

Turn OFF the power supply, and then disconnect the FTM-400XDR/XDE power cable from the 13.8 Volt DC cable.

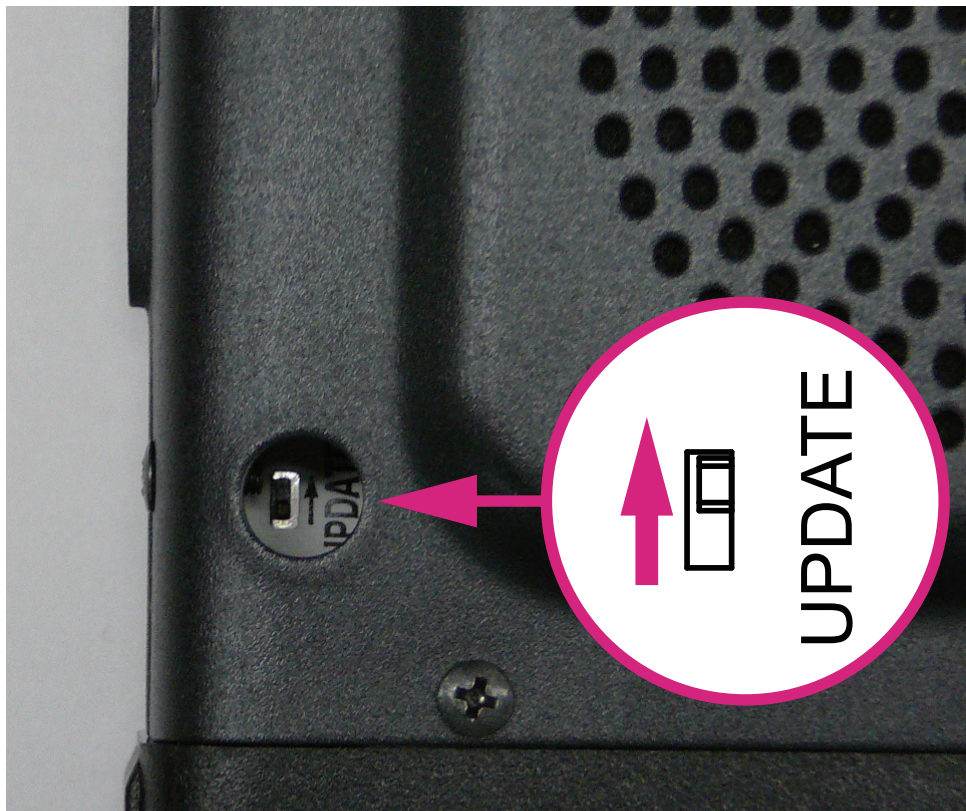


Change the program switch

Remove the rubber cap from the top of the case.

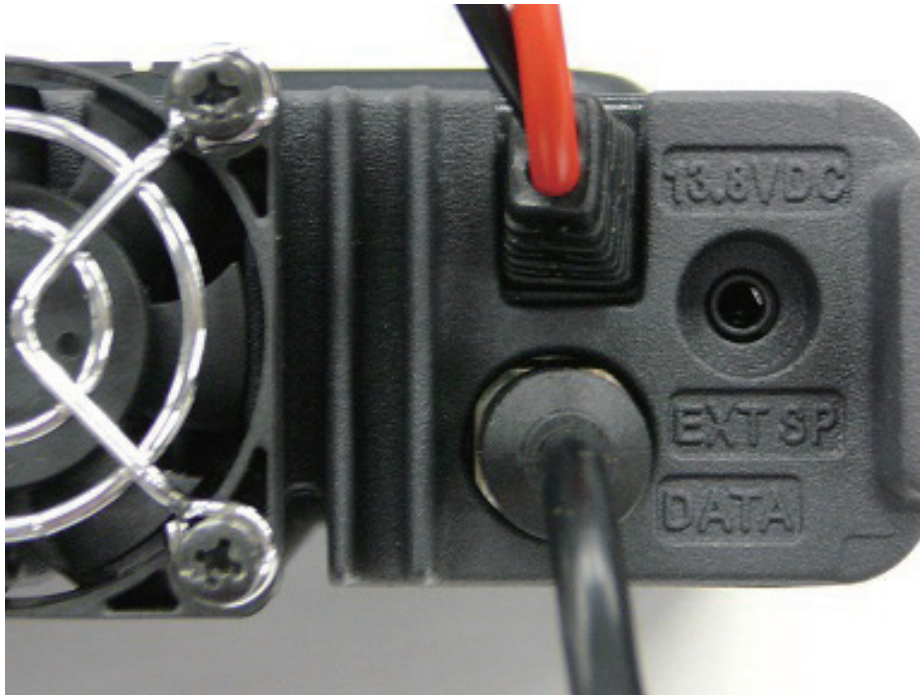


Set the slide SW on the PC board rearward.



Connect the data cable to the FTM-400XD.

Connect the serial data cable to the data jack at the rear of the FTM-400XDR/XDE.



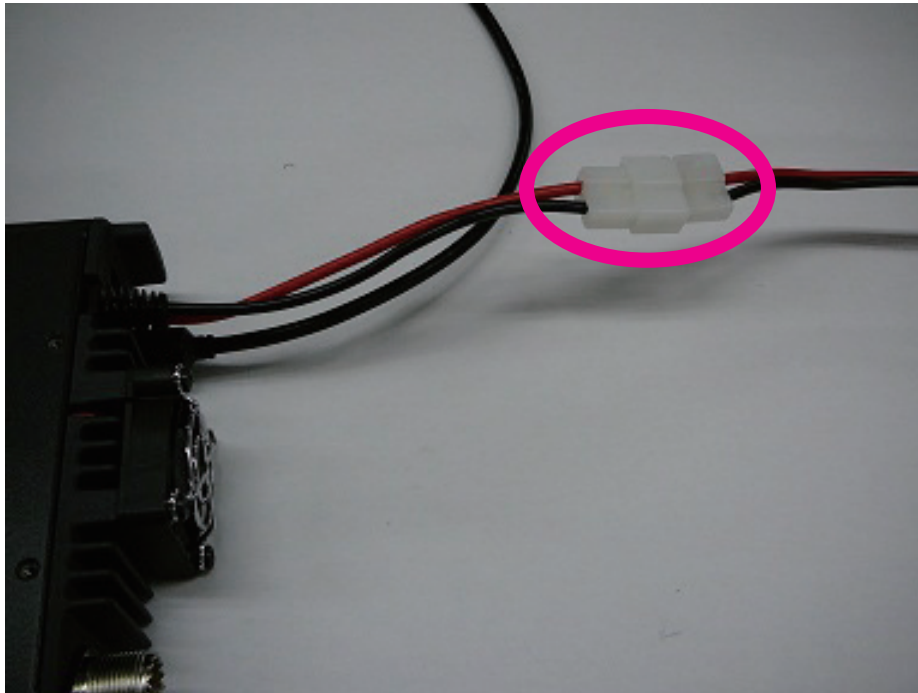
Connect the opposite end of the data cable to the USB port or the COM port of the PC. (Photo shows the SCU-20)



Power supply connection

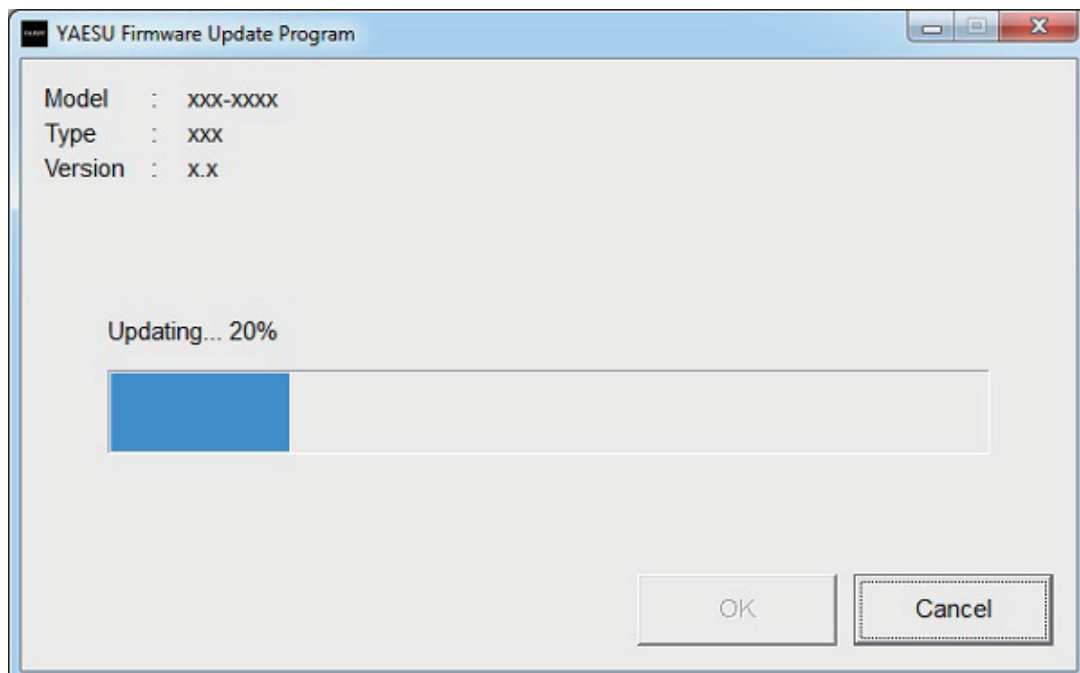
Connect the power cable to the FTM-400XD main body and apply 13.8 V.
Do not attempt to turn on the FTM-400XD transceiver.

When the above preparations are completed, click the OK button to begin the firmware transfer.



Firmware Update Screen

The update progress indicator is displayed when the firmware transfer begins.
Wait for the updating to end. (The process takes about three minutes.)

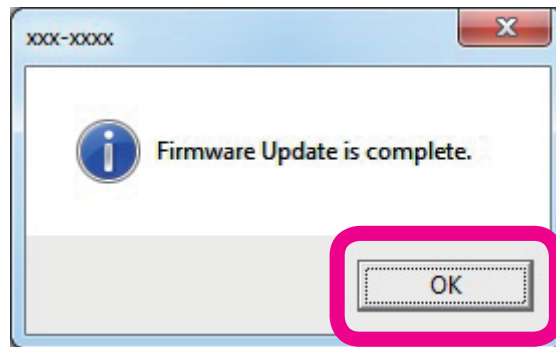


CAUTION!

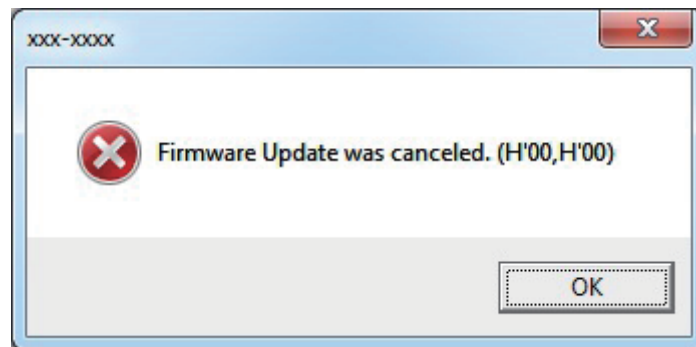
***Do not switch off the power supply to the PC or transceiver during the update.
The transceiver may not function normally if the firmware transfer is interrupted during the upgrade.***

When the following pop-up screen is displayed, upon completion of the update, press the OK button.

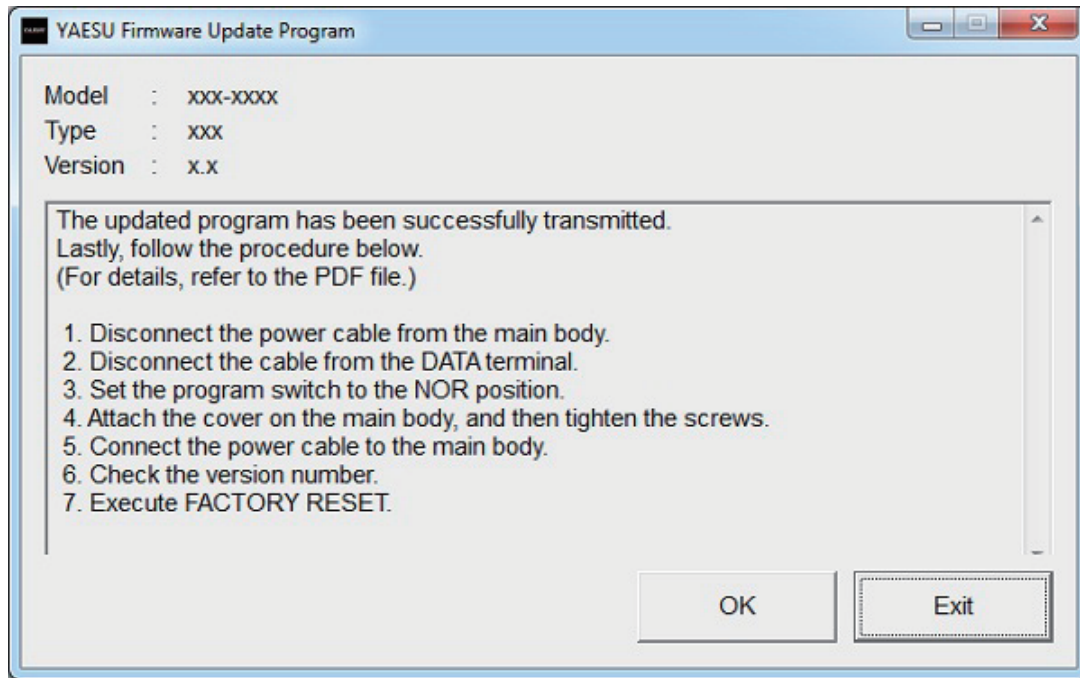
When the following pop-up screen is displayed, upon completion of the update, press the OK button.



The following pop-up screen will be displayed when the updating is cancelled or when the update cannot be carried out for some reason.



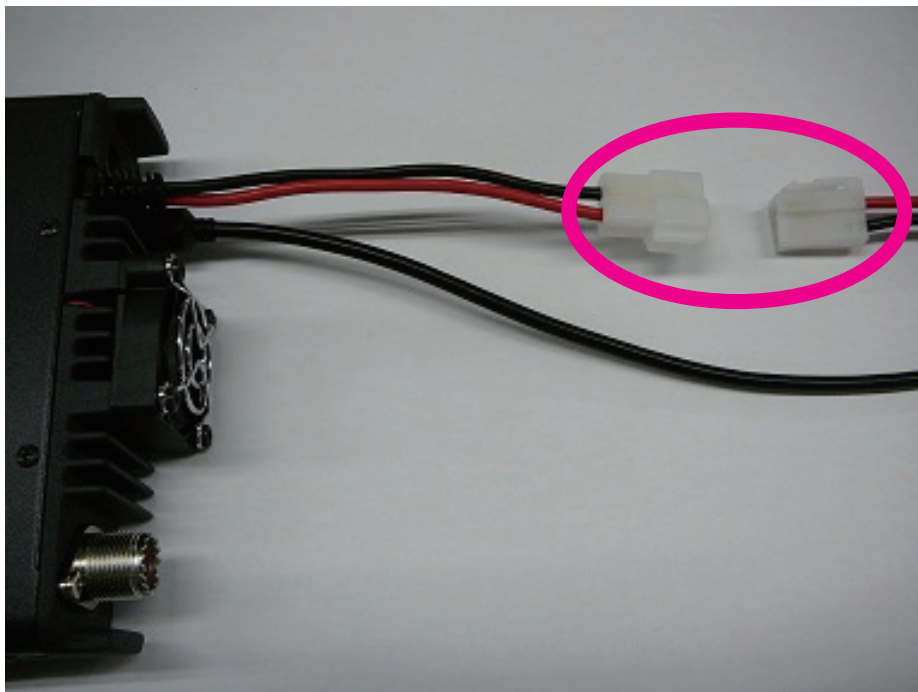
Reassemble the FTM-400XD for Normal Operations



When the updating is completed, the above screen, listing the reassembly procedure will appear. Please perform the respective tasks as follows.

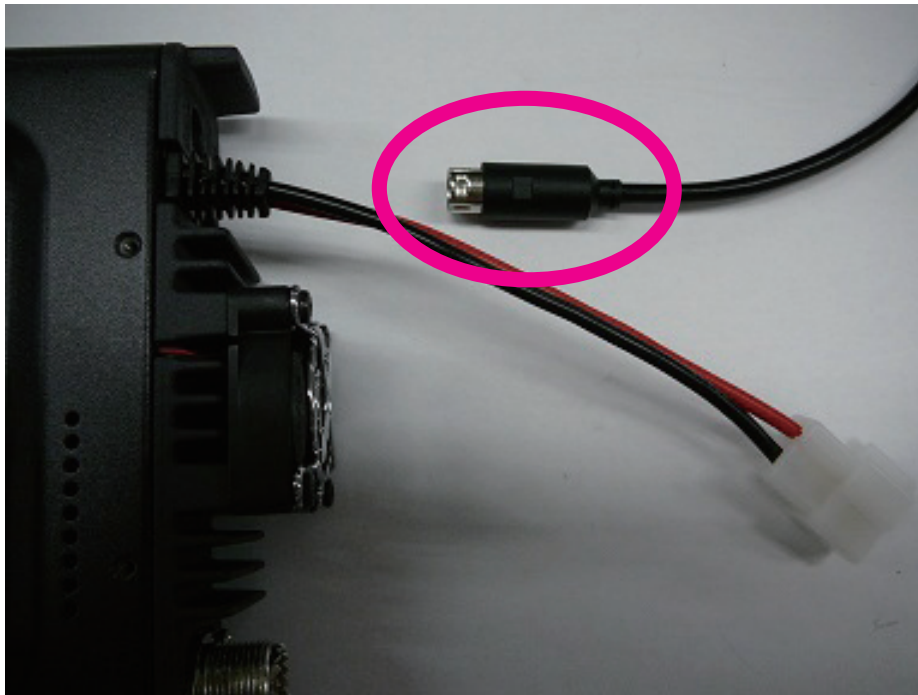
Disconnect the power cable

Disconnect the power cable from the FTM-400XD main body.



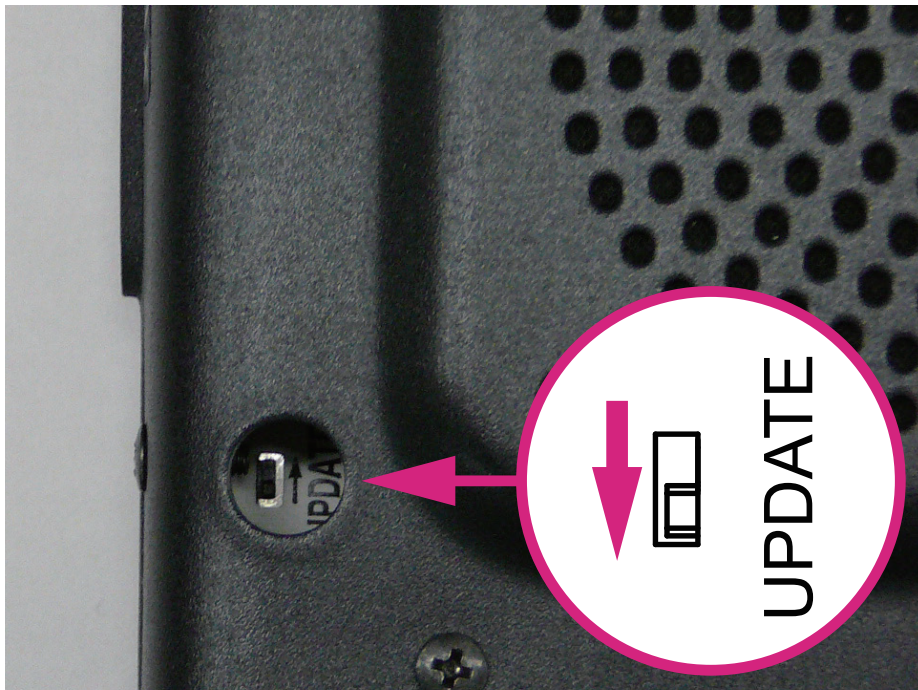
Disconnect the data cable

Disconnect the serial data cable from the data terminal at the back.

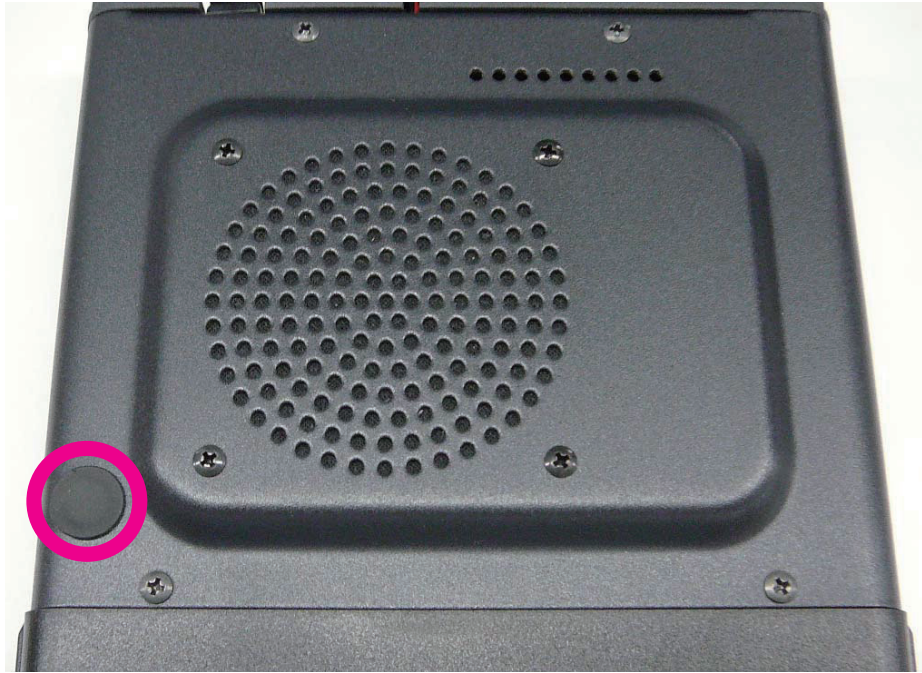


Change the program switch

Return the slide SW on the PC board to the original position (slide SW frontward).
(The transceiver will not work if the switch is not returned to the operating mode.)

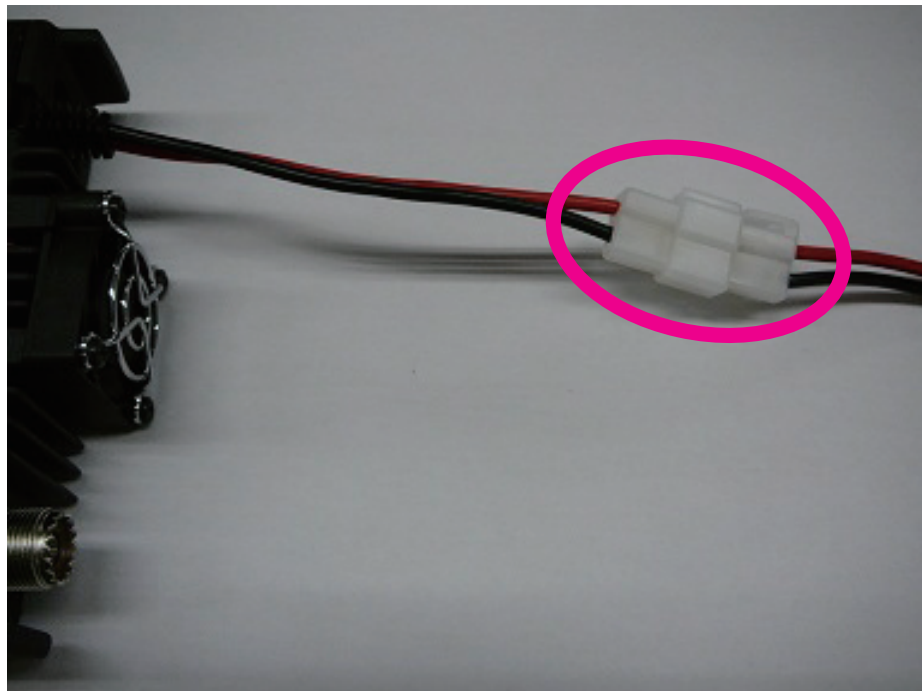


Replace the rubber cap on the top of the case



Power supply connection

Connect the power cable to the FTM-400XD main body and apply 13.8 V.



Check the Version No.

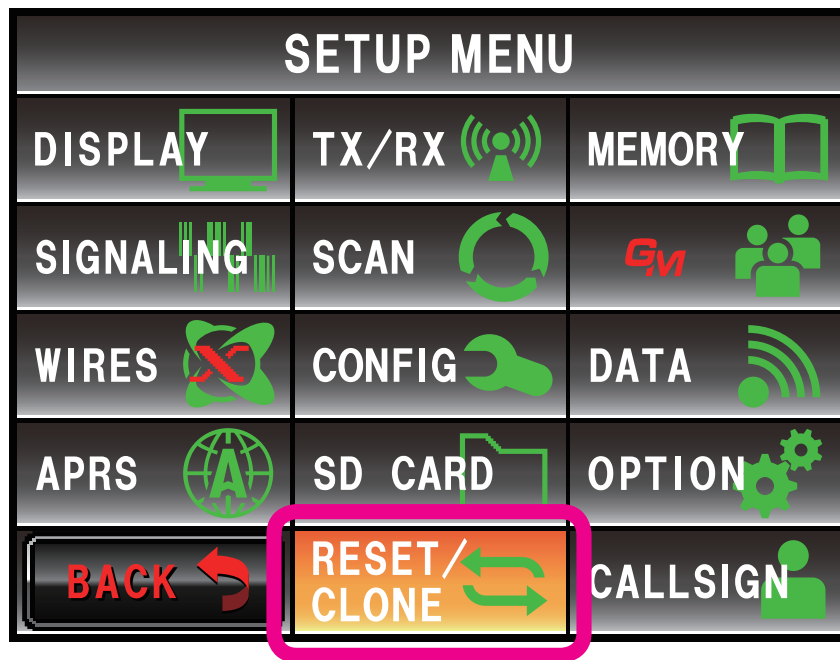
1. Press and hold [POWER] key for over 2 seconds to turn the transceiver ON.



2. Press and hold [DISP (SETUP)] key for over 1 second.
The set-up menu will be displayed.



3. Touch [RESET/CLONE]



4. Check the Version No. displayed at the top of the screen.
If the MAIN Version No. has been updated, the firmware update was successfully completed.
(PANEL Version No. will not be updated.)



Factory reset

1. Touch [FACTORY RESET]



2. When the below screen appears, press [OK?] to execute the factory reset.



With this, all the tasks are completed.

Press the [Exit] button on the program screen of the PC to end the program.

Or, press the [OK] button to return to the start-up screen. to update the firmware of another transceiver.

Company and product names described in this manual are trademarks or registered trademarks.

Microsoft®, Windows®, Windows® 7, Windows® 8, Windows® 8.1, Windows® 10 are registered trademarks of Microsoft Corporation in the United States and other countries.

